

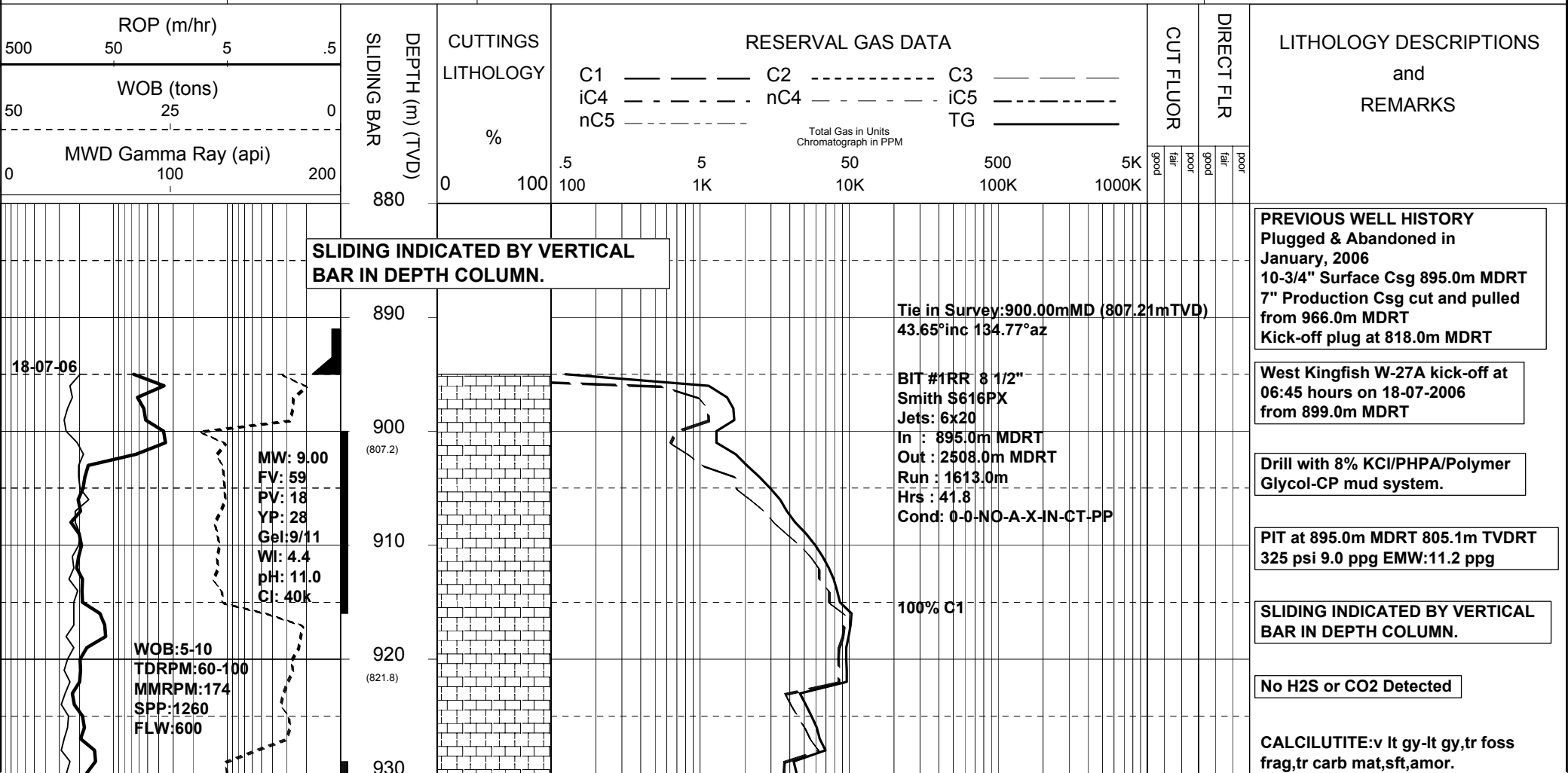


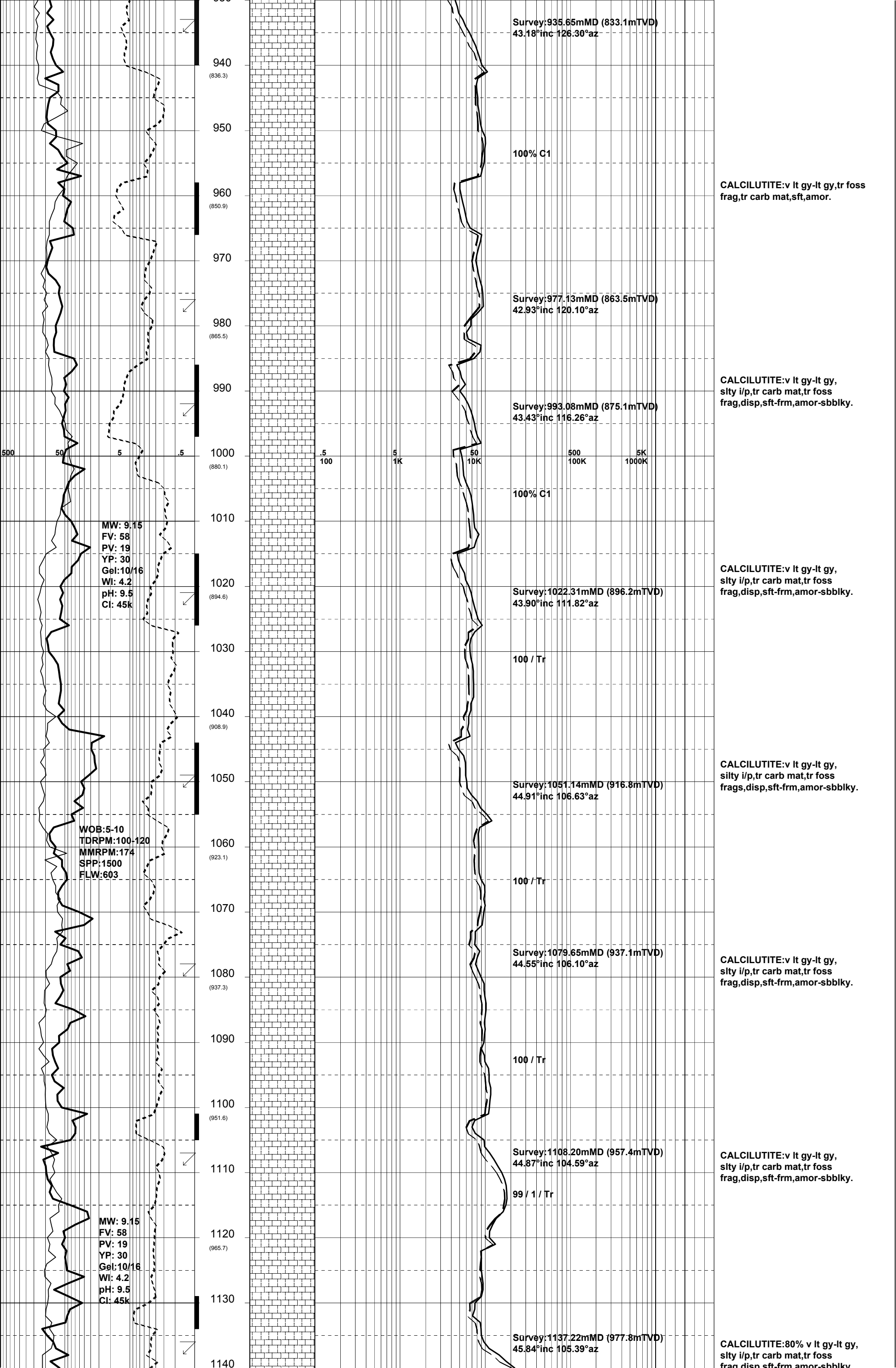
# MASTERLOG WKF W-27A

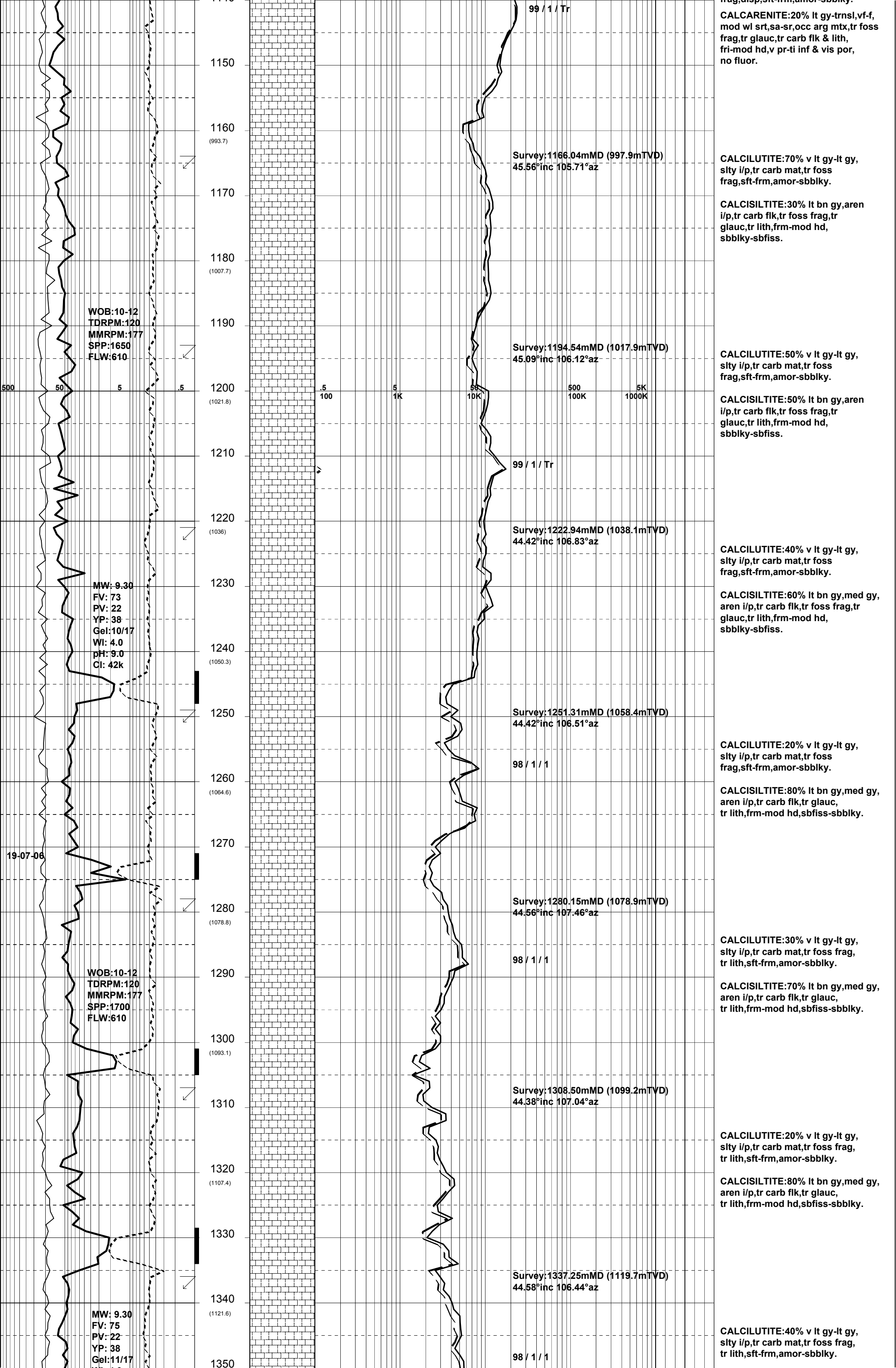


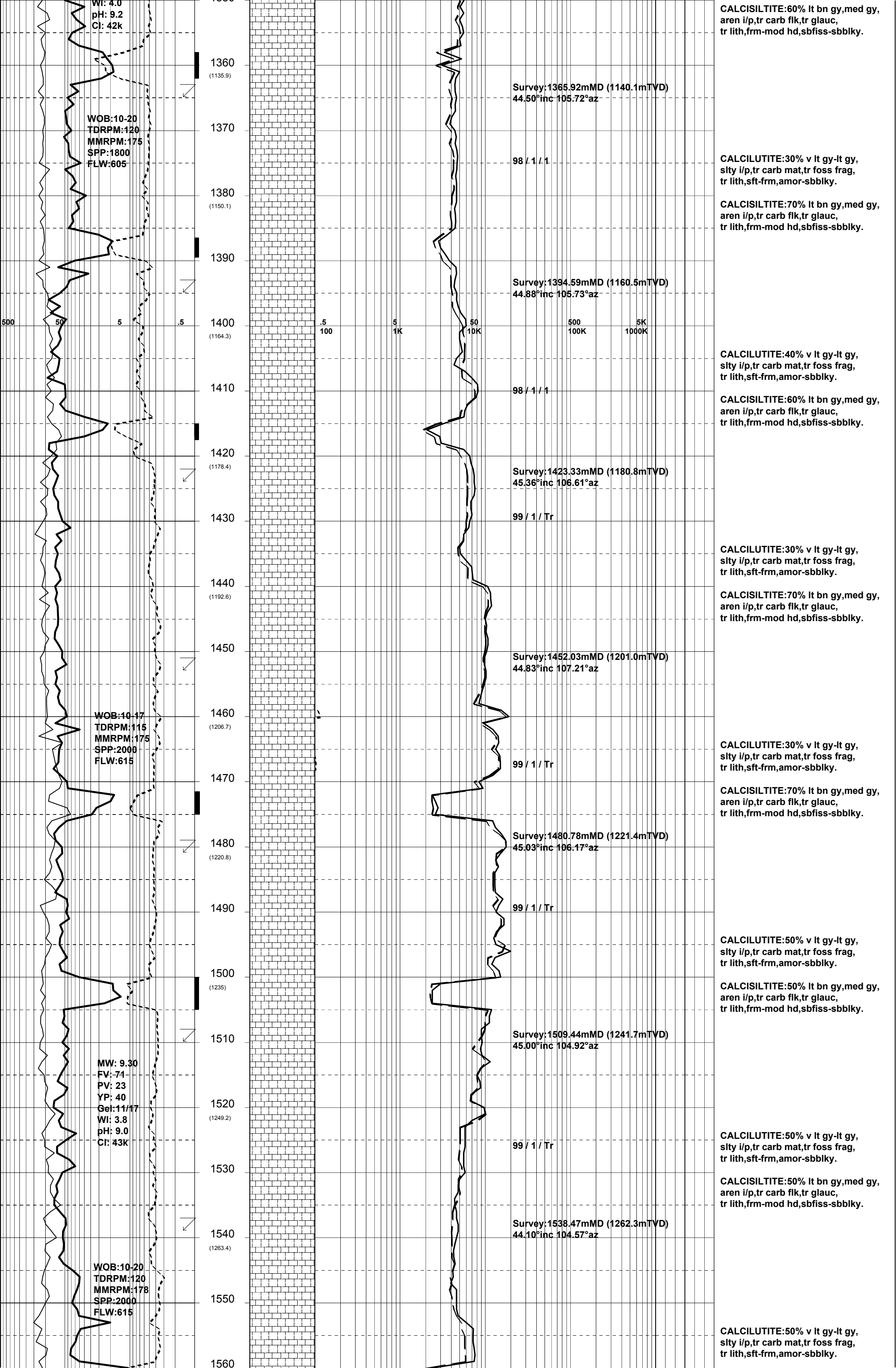
GENERAL	SURFACE POSITON	HOLE / CASING INFO	DATE / DEPTH	ENGINEERS
Country : AUSTRALIA Permit : VIC L7 Field : Kingfish Basin : GIPPSLAND Well Type : DEVELOPMENT Rig Name : NABORS 453	Longitude : 148 06 20.022E Latitude : 38 35 34.851S MGA Co-ord X : 596279.88mE MGA Co-ord Y : 5727806.02mN RT to MSL : 33.43m RT to Sea Bed : 109.56m	8-1/2" Hole to 3095.0m MDRT  10-3/4" Csg Shoe at 895.0m MDRT 7" Production Csg at 3090.0m MDRT	Spud Date : 18-07-2006 Total Depth Date : 24-07-2006 Total Depth : 3095.0m MDRT True Vertical Depth : 2366.19m TVDRT Log Scale : 1/ 500	Steve Oades Mark Smith Noel Elliott

ABBREVIATIONS		LITHOLOGY LEGEND				ENGINEERING LEGEND	
MW Mud Weight	WOB Weight on Bit (klbs)	CLAYSTONE	MARL	BRYOZOA	CARB FRAGMENT	CASING SHOE	WIRELINE LOGS
FV Funnel Viscosity	RPM Rotations Per Min	SILTSTONE	LIMESTONE	RADIOLARITES	QUARTZITE	LINER HANGER	MDT POINTS:
PV Plastic Viscosity	FLW Flow Rate (gpm)	SST: F - V FINE	DOLOMITE	ECHINOIDS	INTRUSIVES	BIT CHANGE	PRESSURE ONLY
YP Yield Point	SPP Pump Pressure (psi)	SST: MEDIUM	CHERT	CORALS	GLAUCONITE	DEVI. SURVEY	SAMPLE
Gel Gel Strength	RR Re-Run Bit	SST: COARSE	CONGLOMERATE	FORAMINIFERA	PYRITE	SWC UNRECOV	SEAL FAILURE
WL Water Loss	TG Trip Gas	SHALE	COAL	LITHIC FRAGMENT	CEMENT	SIDEWALL CORE	TIGHT
KCl Potassium Chloride	CG Connection Gas					CORE	
Cl Chlorides	BG Background Gas						
Incl Inclination	DGP Drilled Gas Peak						
Az Azimuth	MM Mud Motor						









WI: 4.0  
pH: 9.2  
Cl: 42k

WOB:10-20  
TDRPM:120  
MMRPM:175  
SPP:1800  
FLW:605

WOB:10-17  
TDRPM:115  
MMRPM:175  
SPP:2000  
FLW:615

MW: 9.30  
FV: 71  
PV: 23  
YP: 40  
Gel:11/17  
WI: 3.8  
pH: 9.0  
Cl: 43k

WOB:10-20  
TDRPM:120  
MMRPM:178  
SPP:2000  
FLW:615

1360 (1135.9)  
1370  
1380 (1150.1)  
1390  
1400 (1164.3)  
1410  
1420 (1178.4)  
1430  
1440 (1192.6)  
1450  
1460 (1206.7)  
1470  
1480 (1220.8)  
1490  
1500 (1235)  
1510  
1520 (1249.2)  
1530  
1540 (1263.4)  
1550  
1560

Survey:1365.92mMD (1140.1mTVD)  
44.50°inc 105.72°az

98 / 1 / 1

Survey:1394.59mMD (1160.5mTVD)  
44.88°inc 105.73°az

98 / 1 / 1

Survey:1423.33mMD (1180.8mTVD)  
45.36°inc 106.61°az

99 / 1 / Tr

Survey:1452.03mMD (1201.0mTVD)  
44.83°inc 107.21°az

99 / 1 / Tr

Survey:1480.78mMD (1221.4mTVD)  
45.03°inc 106.17°az

99 / 1 / Tr

Survey:1509.44mMD (1241.7mTVD)  
45.00°inc 104.92°az

99 / 1 / Tr

Survey:1538.47mMD (1262.3mTVD)  
44.10°inc 104.57°az

CALCISILTITE:60% lt bn gy,med gy,  
aren i/p,tr carb flk,tr glauc,  
tr lith,frm-mod hd,sbfiss-sbblky.

CALCILUTITE:30% v lt gy-lt gy,  
silty i/p,tr carb mat,tr foss frag,  
tr lith,sft-frm,amor-sbblky.

CALCISILTITE:70% lt bn gy,med gy,  
aren i/p,tr carb flk,tr glauc,  
tr lith,frm-mod hd,sbfiss-sbblky.

CALCILUTITE:40% v lt gy-lt gy,  
silty i/p,tr carb mat,tr foss frag,  
tr lith,sft-frm,amor-sbblky.

CALCISILTITE:60% lt bn gy,med gy,  
aren i/p,tr carb flk,tr glauc,  
tr lith,frm-mod hd,sbfiss-sbblky.

CALCILUTITE:30% v lt gy-lt gy,  
silty i/p,tr carb mat,tr foss frag,  
tr lith,sft-frm,amor-sbblky.

CALCISILTITE:70% lt bn gy,med gy,  
aren i/p,tr carb flk,tr glauc,  
tr lith,frm-mod hd,sbfiss-sbblky.

CALCILUTITE:30% v lt gy-lt gy,  
silty i/p,tr carb mat,tr foss frag,  
tr lith,sft-frm,amor-sbblky.

CALCISILTITE:70% lt bn gy,med gy,  
aren i/p,tr carb flk,tr glauc,  
tr lith,frm-mod hd,sbfiss-sbblky.

CALCILUTITE:50% v lt gy-lt gy,  
silty i/p,tr carb mat,tr foss frag,  
tr lith,sft-frm,amor-sbblky.

CALCISILTITE:50% lt bn gy,med gy,  
aren i/p,tr carb flk,tr glauc,  
tr lith,frm-mod hd,sbfiss-sbblky.

CALCILUTITE:50% v lt gy-lt gy,  
silty i/p,tr carb mat,tr foss frag,  
tr lith,sft-frm,amor-sbblky.

CALCISILTITE:50% lt bn gy,med gy,  
aren i/p,tr carb flk,tr glauc,  
tr lith,frm-mod hd,sbfiss-sbblky.

CALCILUTITE:50% v lt gy-lt gy,  
silty i/p,tr carb mat,tr foss frag,  
tr lith,sft-frm,amor-sbblky.

500

50

5

.5

.5

5

50

500

5K

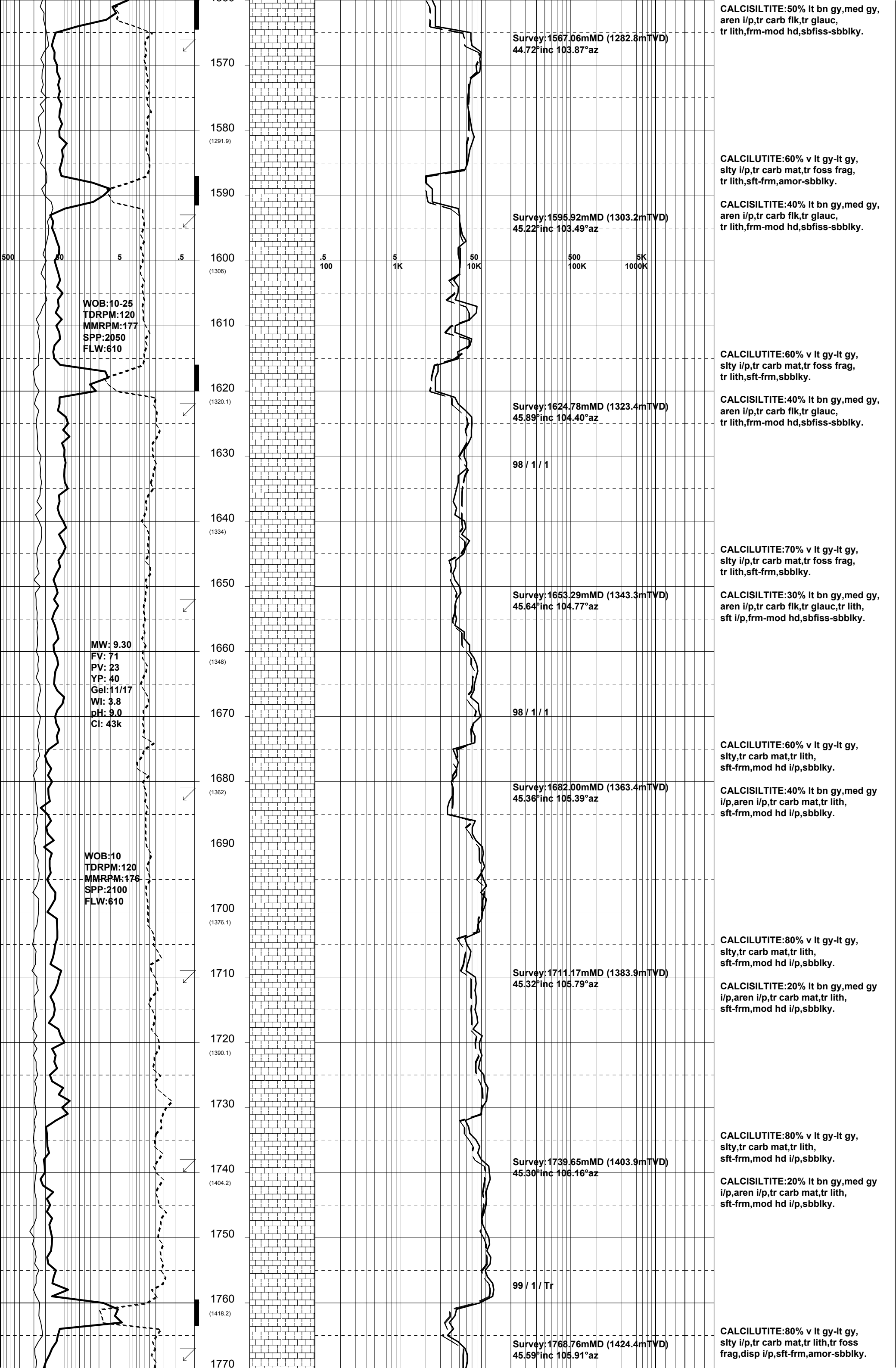
100

1K

10K

100K

1000K



Survey:1567.06mMD (1282.8mTVD)  
44.72°inc 103.87°az

CALCISILTITE:50% lt bn gy,med gy,  
aren i/p,tr carb flk,tr glauc,  
tr lith,frm-mod hd,sbfiss-sbblky.

1570

1580  
(1291.9)

CALCILUTITE:60% v lt gy-lt gy,  
slyt i/p,tr carb mat,tr foss frag,  
tr lith,sft-frm,amor-sbblky.

Survey:1595.92mMD (1303.2mTVD)  
45.22°inc 103.49°az

CALCISILTITE:40% lt bn gy,med gy,  
aren i/p,tr carb flk,tr glauc,  
tr lith,frm-mod hd,sbfiss-sbblky.

1590

1600  
(1306)

WOB:10-25  
TDRPM:120  
MMRPM:177  
SPP:2050  
FLW:610

.5 5 50 500 5K  
100 1K 10K 100K 1000K

1610

CALCILUTITE:60% v lt gy-lt gy,  
slyt i/p,tr carb mat,tr foss frag,  
tr lith,sft-frm,sbblky.

Survey:1624.78mMD (1323.4mTVD)  
45.89°inc 104.40°az

CALCISILTITE:40% lt bn gy,med gy,  
aren i/p,tr carb flk,tr glauc,  
tr lith,frm-mod hd,sbfiss-sbblky.

1620  
(1320.1)

1630

98 / 1 / 1

1640  
(1334)

CALCILUTITE:70% v lt gy-lt gy,  
slyt i/p,tr carb mat,tr foss frag,  
tr lith,sft-frm,sbblky.

Survey:1653.29mMD (1343.3mTVD)  
45.64°inc 104.77°az

CALCISILTITE:30% lt bn gy,med gy,  
aren i/p,tr carb flk,tr glauc,tr lith,  
sft i/p,frm-mod hd,sbfiss-sbblky.

1650

1660  
(1348)

MW: 9.30  
FV: 71  
PV: 23  
YP: 40  
Gel:11/17  
WI: 3.8  
pH: 9.0  
Cl: 43k

98 / 1 / 1

1670

CALCILUTITE:60% v lt gy-lt gy,  
slyt,tr carb mat,tr lith,  
sft-frm,mod hd i/p,sbblky.

Survey:1682.00mMD (1363.4mTVD)  
45.36°inc 105.39°az

CALCISILTITE:40% lt bn gy,med gy  
i/p,aren i/p,tr carb mat,tr lith,  
sft-frm,mod hd i/p,sbblky.

1680  
(1362)

1690

WOB:10  
TDRPM:120  
MMRPM:176  
SPP:2100  
FLW:610

CALCILUTITE:80% v lt gy-lt gy,  
slyt,tr carb mat,tr lith,  
sft-frm,mod hd i/p,sbblky.

Survey:1711.17mMD (1383.9mTVD)  
45.32°inc 105.79°az

CALCISILTITE:20% lt bn gy,med gy  
i/p,aren i/p,tr carb mat,tr lith,  
sft-frm,mod hd i/p,sbblky.

1700  
(1376.1)

1710

1720  
(1390.1)

1730

CALCILUTITE:80% v lt gy-lt gy,  
slyt,tr carb mat,tr lith,  
sft-frm,mod hd i/p,sbblky.

Survey:1739.65mMD (1403.9mTVD)  
45.30°inc 106.16°az

CALCISILTITE:20% lt bn gy,med gy  
i/p,aren i/p,tr carb mat,tr lith,  
sft-frm,mod hd i/p,sbblky.

1740  
(1404.2)

1750

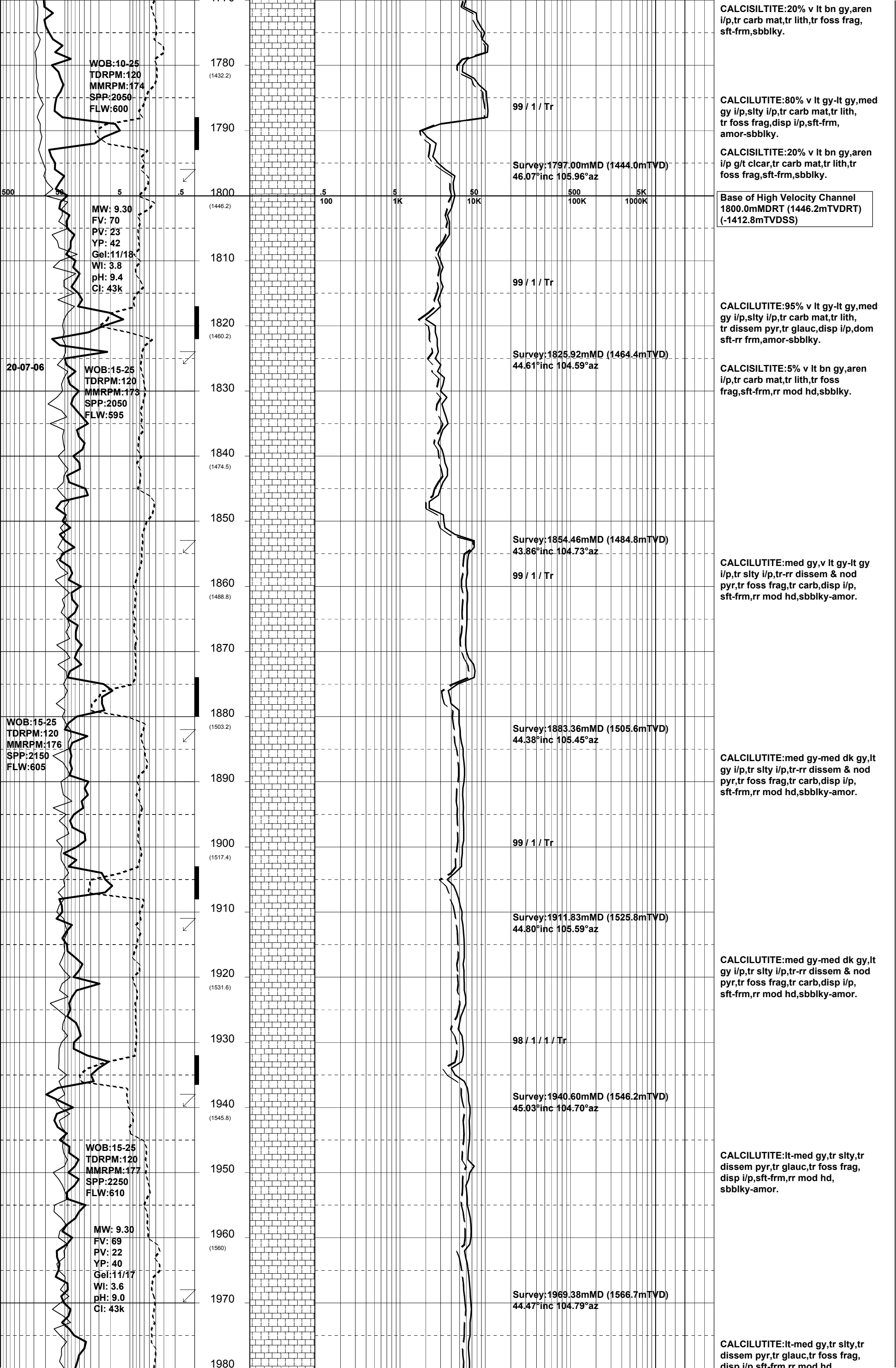
99 / 1 / Tr

1760  
(1418.2)

CALCILUTITE:80% v lt gy-lt gy,  
slyt i/p,tr carb mat,tr lith,tr foss  
frag,disp i/p,sft-frm,amor-sbblky.

Survey:1768.76mMD (1424.4mTVD)  
45.59°inc 105.91°az

1770



WOB:10-25  
TDRPM:120  
MMRPM:174  
SPP:2050  
FLW:600

1780  
(1432.2)

99 / 1 / Tr

i/p,tr carb mat,tr lith,tr foss frag,  
sft-frm,sbblky.

CALCILUTITE:80% v lt gy-lt gy,med  
gy i/p,slty i/p,tr carb mat,tr lith,  
tr foss frag,disp i/p,sft-frm,  
amor-sbblky.

CALCISILTITE:20% v lt bn gy,aren  
i/p g/t clear,tr carb mat,tr lith,tr  
foss frag,sft-frm,sbblky.

Base of High Velocity Channel  
1800.0mMDRT (1446.2mTVDRT)  
(-1412.8mTVDSS)

MW: 9.30  
FV: 70  
PV: 23  
YP: 42  
Gel:11/18  
WI: 3.8  
pH: 9.4  
CI: 43k

1800  
(1446.2)

Survey:1797.00mMD (1444.0mTVD)  
46.07°inc 105.96°az

99 / 1 / Tr

CALCILUTITE:95% v lt gy-lt gy,med  
gy i/p,slty i/p,tr carb mat,tr lith,  
tr dissem pyr,tr glauc,disp i/p,dom  
sft-rr frm,amor-sbblky.

CALCISILTITE:5% v lt bn gy,aren  
i/p,tr carb mat,tr lith,tr foss  
frag,sft-frm,rr mod hd,sbblky.

20-07-06

WOB:15-25  
TDRPM:120  
MMRPM:173  
SPP:2050  
FLW:595

1810

1820  
(1460.2)

Survey:1825.92mMD (1464.4mTVD)  
44.61°inc 104.59°az

1830

1840  
(1474.5)

Survey:1854.46mMD (1484.8mTVD)  
43.86°inc 104.73°az

99 / 1 / Tr

CALCILUTITE:med gy,v lt gy-lt gy  
i/p,tr slty i/p,tr-rr dissem & nod  
pyr,tr foss frag,tr carb,disp i/p,  
sft-frm,rr mod hd,sbblky-amor.

WOB:15-25

TDRPM:120  
MMRPM:176  
SPP:2150  
FLW:605

1880  
(1503.2)

Survey:1883.36mMD (1505.6mTVD)  
44.38°inc 105.45°az

CALCILUTITE:med gy-med dk gy,lt  
gy i/p,tr slty i/p,tr-rr dissem & nod  
pyr,tr foss frag,tr carb,disp i/p,  
sft-frm,rr mod hd,sbblky-amor.

1890

1900  
(1517.4)

99 / 1 / Tr

CALCILUTITE:med gy-med dk gy,lt  
gy i/p,tr slty i/p,tr-rr dissem & nod  
pyr,tr foss frag,tr carb,disp i/p,  
sft-frm,rr mod hd,sbblky-amor.

1910

Survey:1911.83mMD (1525.8mTVD)  
44.80°inc 105.59°az

98 / 1 / 1 / Tr

CALCILUTITE:lt-med gy,tr slty,tr  
dissem pyr,tr glauc,tr foss frag,  
disp i/p,sft-frm,rr mod hd,  
sbblky-amor.

WOB:15-25  
TDRPM:120  
MMRPM:177  
SPP:2250  
FLW:610

1950

Survey:1940.60mMD (1546.2mTVD)  
45.03°inc 104.70°az

MW: 9.30  
FV: 69  
PV: 22  
YP: 40  
Gel:11/17  
WI: 3.6  
pH: 9.0  
CI: 43k

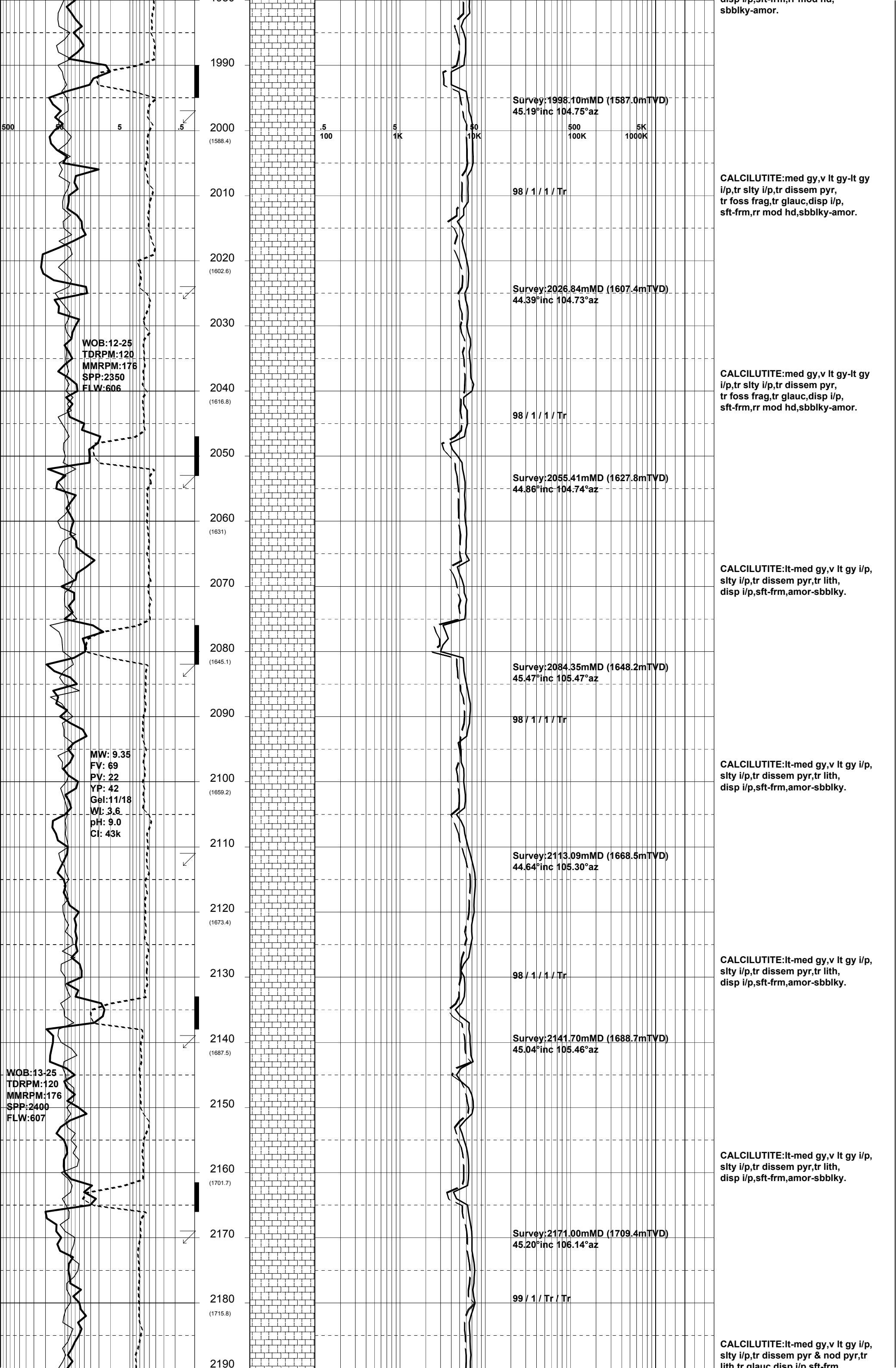
1960  
(1560)

Survey:1969.38mMD (1566.7mTVD)  
44.47°inc 104.79°az

CALCILUTITE:lt-med gy,tr slty,tr  
dissem pyr,tr glauc,tr foss frag,  
disp i/p,sft-frm,rr mod hd

1970

1980



disp i/p, sft frm, rr mod hd, sbbkly-amor.

CALCILUTITE:med gy,v lt gy-lt gy  
i/p, tr slty i/p, tr disse pyr,  
tr foss frag, tr glauc, disp i/p,  
sft frm, rr mod hd, sbbkly-amor.

CALCILUTITE:med gy,v lt gy-lt gy  
i/p, tr slty i/p, tr disse pyr,  
tr foss frag, tr glauc, disp i/p,  
sft frm, rr mod hd, sbbkly-amor.

CALCILUTITE:lt-med gy,v lt gy i/p,  
slty i/p, tr disse pyr, tr lith,  
disp i/p, sft frm, amor-sbbkly.

CALCILUTITE:lt-med gy,v lt gy i/p,  
slty i/p, tr disse pyr, tr lith,  
disp i/p, sft frm, amor-sbbkly.

CALCILUTITE:lt-med gy,v lt gy i/p,  
slty i/p, tr disse pyr, tr lith,  
disp i/p, sft frm, amor-sbbkly.

CALCILUTITE:lt-med gy,v lt gy i/p,  
slty i/p, tr disse pyr, tr lith,  
disp i/p, sft frm, amor-sbbkly.

CALCILUTITE:lt-med gy,v lt gy i/p,  
slty i/p, tr disse pyr & nod pyr, tr  
lith tr glauc disp i/p sft frm

500

5

.5

.5

5

50

500

5K

100

1K

10K

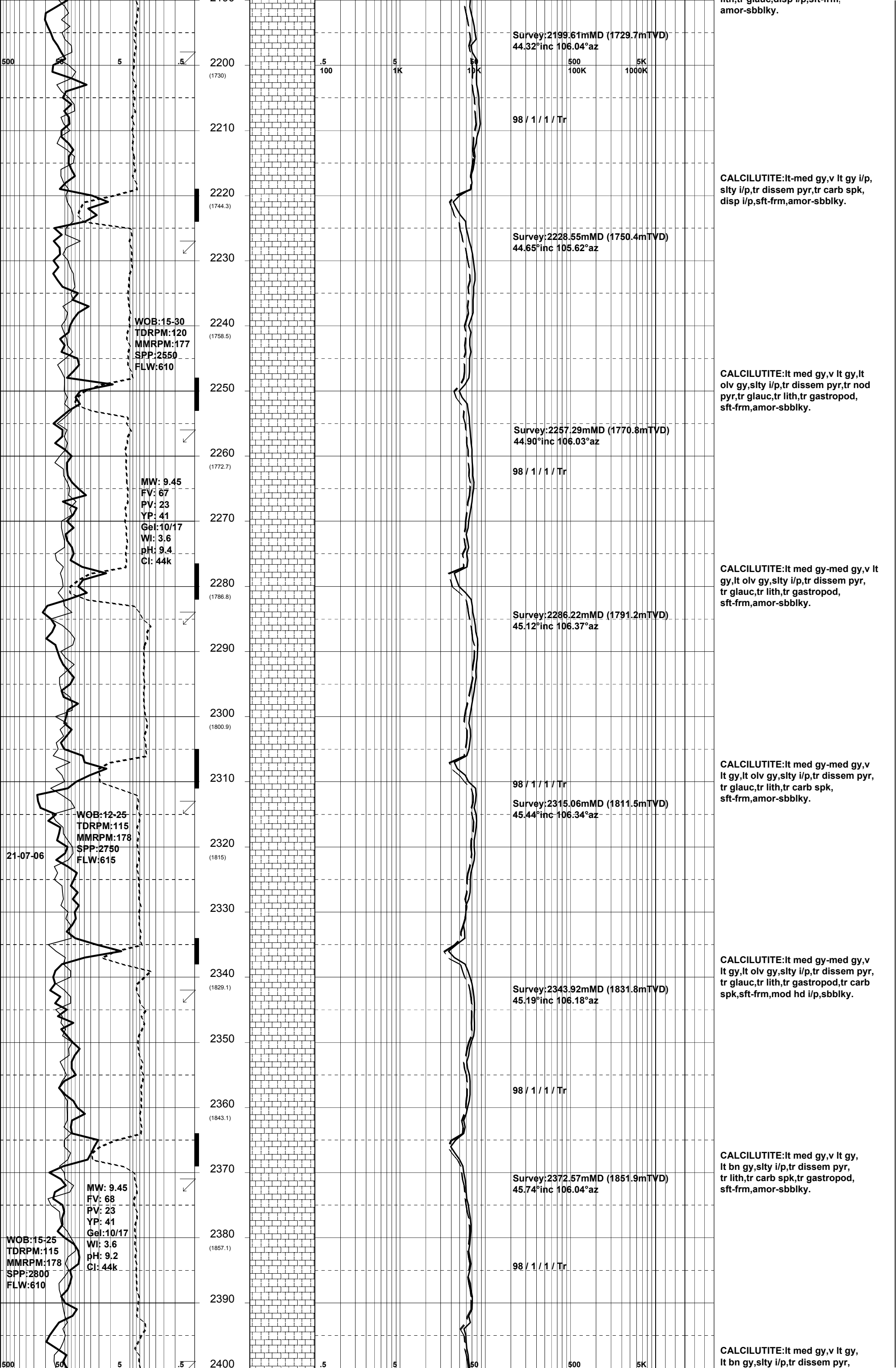
100K

1000K

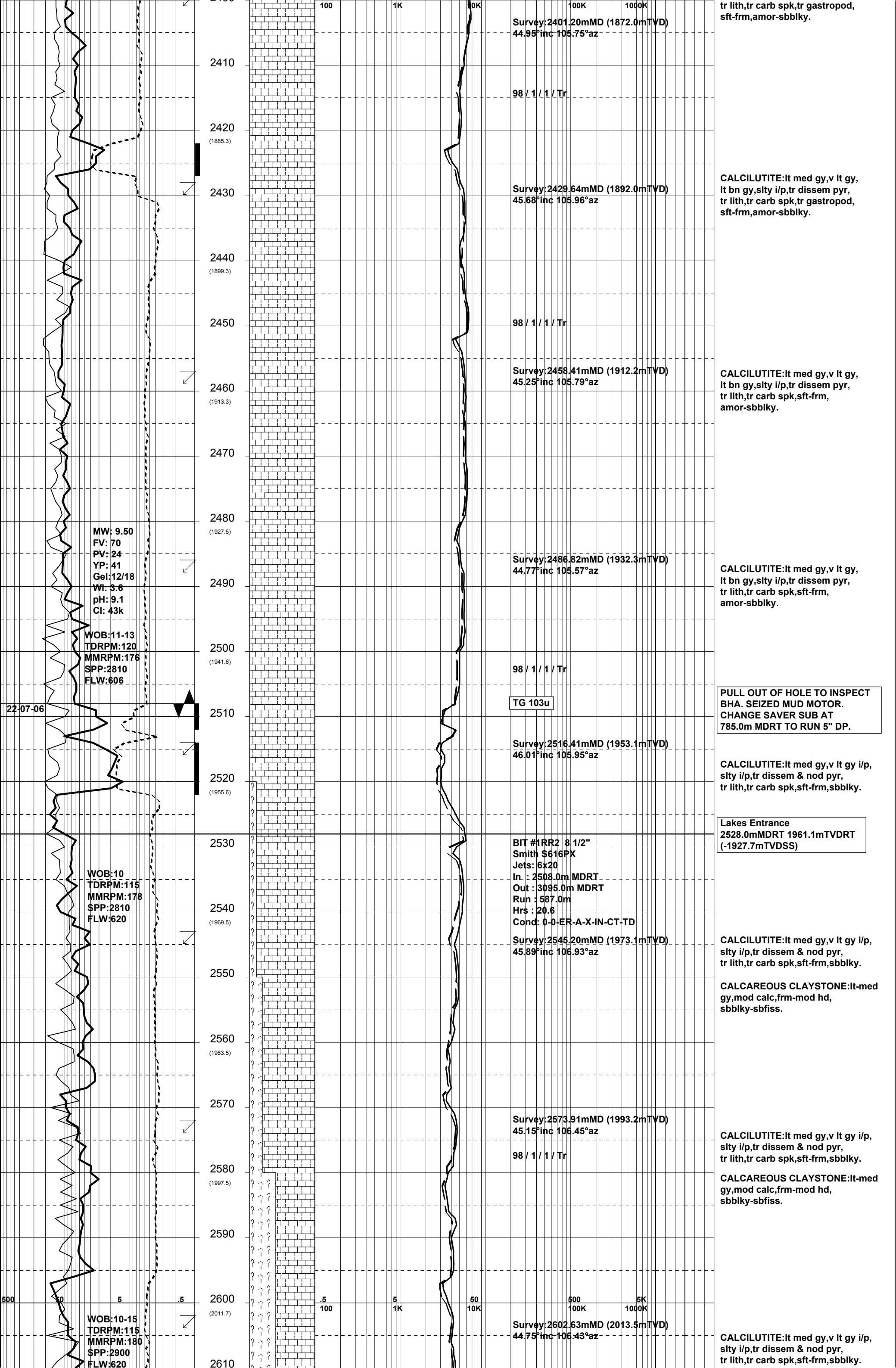
WOB:12-25  
TDRPM:120  
MMRPM:176  
SPP:2350  
FLW:606

MW: 9.35  
FV: 69  
PV: 22  
YP: 42  
Gel: 11/18  
WI: 3.6  
pH: 9.0  
Ct: 43k

WOB:13-25  
TDRPM:120  
MMRPM:176  
SPP:2400  
FLW:607







tr lith, tr carb spk, tr gastropod, sft frm, amor-sbbkly.

Survey: 2401.20mMD (1872.0mTVD)  
44.95°inc 105.75°az

98 / 1 / 1 / Tr

CALCILUTITE: It med gy, v lt gy, lt bn gy, slty i/p, tr dissem pyr, tr lith, tr carb spk, tr gastropod, sft frm, amor-sbbkly.

Survey: 2429.64mMD (1892.0mTVD)  
45.68°inc 105.96°az

98 / 1 / 1 / Tr

CALCILUTITE: It med gy, v lt gy, lt bn gy, slty i/p, tr dissem pyr, tr lith, tr carb spk, sft frm, amor-sbbkly.

Survey: 2458.41mMD (1912.2mTVD)  
45.25°inc 105.79°az

MW: 9.50  
FV: 70  
PV: 24  
YP: 41  
Gel: 12/18  
Wt: 3.6  
pH: 9.1  
Cl: 43k

WOB: 11-13  
TDRPM: 120  
MMRPM: 176  
SPP: 2810  
FLW: 606

Survey: 2486.82mMD (1932.3mTVD)  
44.77°inc 105.57°az

CALCILUTITE: It med gy, v lt gy, lt bn gy, slty i/p, tr dissem pyr, tr lith, tr carb spk, sft frm, amor-sbbkly.

98 / 1 / 1 / Tr

TG 103u

PULL OUT OF HOLE TO INSPECT BHA. SEIZED MUD MOTOR. CHANGE SAVER SUB AT 785.0m MDRT TO RUN 5" DP.

Survey: 2516.41mMD (1953.1mTVD)  
46.01°inc 105.95°az

CALCILUTITE: It med gy, v lt gy i/p, slty i/p, tr dissem & nod pyr, tr lith, tr carb spk, sft frm, sbbkly.

Lakes Entrance  
2528.0mMDRT 1961.1mTVDRT (-1927.7mTVDSS)

BIT #1RR2 8 1/2"  
Smith S616PX  
Jets: 6x20  
In : 2508.0m MDRT  
Out : 3095.0m MDRT  
Run : 587.0m  
Hrs : 20.6  
Cond: 0-0-ER-A-X-IN-CT-TD

WOB: 10  
TDRPM: 115  
MMRPM: 178  
SPP: 2810  
FLW: 620

Survey: 2545.20mMD (1973.1mTVD)  
45.89°inc 106.93°az

CALCILUTITE: It med gy, v lt gy i/p, slty i/p, tr dissem & nod pyr, tr lith, tr carb spk, sft frm, sbbkly.

CALCAREOUS CLAYSTONE: It-med gy, mod calc, frm-mod hd, sbbkly-sbfiss.

Survey: 2573.91mMD (1993.2mTVD)  
45.15°inc 106.45°az

98 / 1 / 1 / Tr

CALCILUTITE: It med gy, v lt gy i/p, slty i/p, tr dissem & nod pyr, tr lith, tr carb spk, sft frm, sbbkly.

CALCAREOUS CLAYSTONE: It-med gy, mod calc, frm-mod hd, sbbkly-sbfiss.

Survey: 2602.63mMD (2013.5mTVD)  
44.75°inc 106.43°az

WOB: 10-15  
TDRPM: 115  
MMRPM: 180  
SPP: 2900  
FLW: 620

CALCILUTITE: It med gy, v lt gy i/p, slty i/p, tr dissem & nod pyr, tr lith, tr carb spk, sft frm, sbbkly.

MW: 9.50  
FV: 68  
PV: 24  
YP: 41  
Gel: 11/17  
Wl: 3.3  
pH: 9.2  
Cl: 45k

23-07-06

WOB: 12-15  
TDRPM: 115  
MMRPM: 180  
SPP: 3000  
FLW: 620

MW: 9.50  
FV: 67  
PV: 24  
YP: 41  
Gel: 11/17  
Wl: 3.3  
pH: 9.2  
Cl: 45k

WOB: 12-14  
TDRPM: 115  
MMRPM: 180  
SPP: 2980  
FLW: 620

2620 (2025.9)  
2630  
2640 (2040.2)  
2650  
2660 (2054.5)  
2670  
2680 (2068.8)  
2690  
2700 (2083.1)  
2710  
2720 (2097.3)  
2730  
2740 (2111.6)  
2750  
2760 (2125.8)  
2770  
2780 (2140)  
2790  
2800 (2154.2)  
2810  
2820

Survey: 2631.30mMD (2034.0mTVD)  
44.15°inc 106.49°az

98 / 1 / 1 / Tr

Survey: 2659.74mMD (2054.3mTVD)  
44.65°inc 105.89°az

Survey: 2688.70mMD (2075.0mTVD)  
44.18°inc 105.85°az

97 / 1 / 1 / 1

Survey: 2717.07mMD (2095.3mTVD)  
44.74°inc 105.74°az

97 / 1 / 1 / 1

Survey: 2746.30mMD (2116.1mTVD)  
44.53°inc 106.17°az

97 / 1 / 1 / 1

Survey: 2774.74mMD (2136.3mTVD)  
44.90°inc 106.39°az

96 / 2 / 1 / 1

Survey: 2802.92mMD (2156.3mTVD)  
44.63°inc 106.63°az

CALCAREOUS CLAYSTONE: It-med gy, mod calc, tr carb spk, tr lith, frm-occ mod hd, sbbly.

CALCILUTITE: It-med gy, v lt gy i/p, slty i/p, tr dissem & nod pyr, tr lith, tr carb spk, sft-frm, sbbly.

CALCAREOUS CLAYSTONE: It-med gy, lt olv gy, mod calc, tr carb spk, tr lith, frm-occ mod hd, sbbly-sbfiss.

REPAIR PUMP

CALCILUTITE: It-med gy, v lt gy i/p, slty i/p, tr dissem & nod pyr, tr lith, tr carb spk, sft-frm, sbbly.

CALCAREOUS CLAYSTONE: It-med gy, lt bn gy, mod calc, tr carb spk, tr lith, tr dissem pyr, tr foss frag, frm-occ mod hd, sbbly-sbfiss.

CALCAREOUS CLAYSTONE: It-med gy, lt bn gy, mod calc, slty i/p, tr dissem pyr, tr foss frag, tr lith, frm-occ mod hd, sbbly-sbfiss.

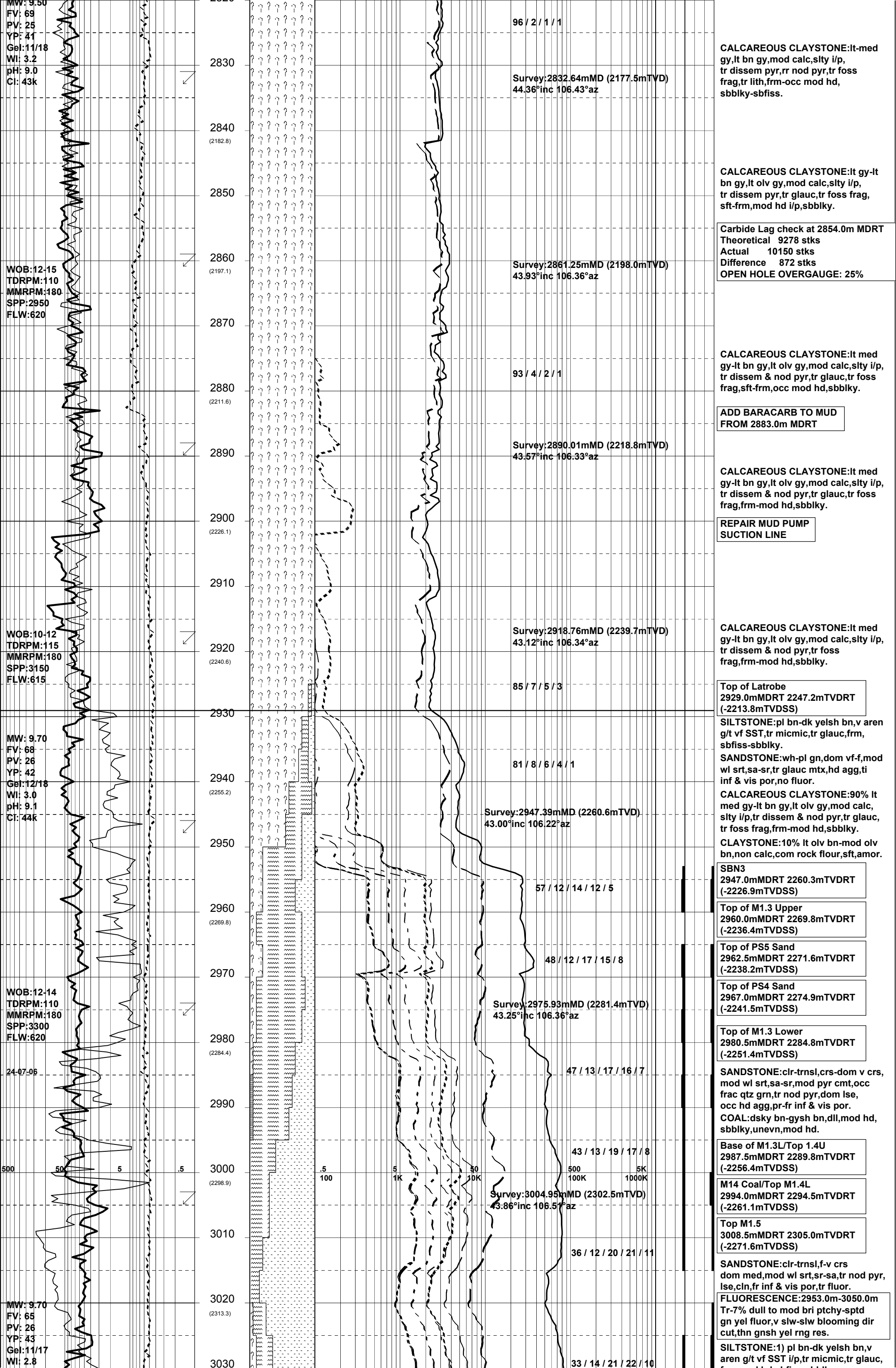
CALCAREOUS CLAYSTONE: It-med gy, lt bn gy, mod calc, slty i/p, tr dissem pyr, tr foss frag, tr lith, frm-occ mod hd, sbbly-sbfiss.

CALCAREOUS CLAYSTONE: It-med gy, lt bn gy, mod calc, slty i/p, tr dissem pyr, rr nod pyr, tr foss frag, tr lith, frm-occ mod hd, sbbly-sbfiss.

CALCAREOUS CLAYSTONE: It-med gy, lt bn gy, mod calc, slty i/p, tr dissem pyr, rr nod pyr, tr foss frag, tr lith, frm-occ mod hd, sbbly-sbfiss.

500 5 .5

.5 100 5 1K 50 10K 500 100K 5K 1000K



FV: 9.50  
 PV: 69  
 YP: 25  
 Gel: 11/18  
 WI: 3.2  
 pH: 9.0  
 CI: 43k

WOB: 12-15  
 TDRPM: 110  
 MMRPM: 180  
 SPP: 2950  
 FLW: 620

WOB: 10-12  
 TDRPM: 115  
 MMRPM: 180  
 SPP: 3150  
 FLW: 615

MW: 9.70  
 FV: 68  
 PV: 26  
 YP: 42  
 Gel: 12/18  
 WI: 3.0  
 pH: 9.1  
 CI: 44k

WOB: 12-14  
 TDRPM: 110  
 MMRPM: 180  
 SPP: 3300  
 FLW: 620

24-07-06

MW: 9.70  
 FV: 65  
 PV: 26  
 YP: 43  
 Gel: 11/17  
 WI: 2.8

96 / 2 / 1 / 1

Survey: 2832.64mMD (2177.5mTVD)  
 44.36°inc 106.43°az

Survey: 2861.25mMD (2198.0mTVD)  
 43.93°inc 106.36°az

Survey: 2890.01mMD (2218.8mTVD)  
 43.57°inc 106.33°az

Survey: 2918.76mMD (2239.7mTVD)  
 43.12°inc 106.34°az

Survey: 2947.39mMD (2260.6mTVD)  
 43.00°inc 106.22°az

Survey: 2975.93mMD (2281.4mTVD)  
 43.25°inc 106.36°az

Survey: 3004.95mMD (2302.5mTVD)  
 43.86°inc 106.51°az

**CALCAREOUS CLAYSTONE:**lt-med gy,lt bn gy,mod calc,slty i/p, tr dissem pyr,rr nod pyr,tr foss frag,tr lith,frm-occ mod hd, sbbiky-sbfiss.

**CALCAREOUS CLAYSTONE:**lt gy-lt bn gy,lt olv gy,mod calc,slty i/p, tr dissem pyr,tr glauc,tr foss frag, sft-frm,mod hd i/p,sbbiky.

**Carbide Lag check at 2854.0m MDRT**  
 Theoretical 9278 stks  
 Actual 10150 stks  
 Difference 872 stks  
**OPEN HOLE OVERGAUGE: 25%**

**CALCAREOUS CLAYSTONE:**lt med gy-lt bn gy,lt olv gy,mod calc,slty i/p, tr dissem & nod pyr,tr glauc,tr foss frag,sft-frm,occ mod hd,sbbiky.

**ADD BARACARB TO MUD FROM 2883.0m MDRT**

**CALCAREOUS CLAYSTONE:**lt med gy-lt bn gy,lt olv gy,mod calc,slty i/p, tr dissem & nod pyr,tr glauc,tr foss frag,frm-mod hd,sbbiky.

**REPAIR MUD PUMP SUCTION LINE**

**CALCAREOUS CLAYSTONE:**lt med gy-lt bn gy,lt olv gy,mod calc,slty i/p, tr dissem & nod pyr,tr foss frag,frm-mod hd,sbbiky.

**Top of Latrobe**  
 2929.0mMDRT 2247.2mTVDRT (-2213.8mTVDSS)

**SILTSTONE:**pl bn-dk yelsh bn,v aren g/t vf SST,tr micmic,tr glauc,frm, sbfiss-sbbiky.

**SANDSTONE:**wh-pl gn,dom vf-f,mod wl srt,sa-sr,tr glauc mtx,hd agg,ti inf & vis por,no fluor.

**CALCAREOUS CLAYSTONE:**90% lt med gy-lt bn gy,lt olv gy,mod calc, slty i/p, tr dissem & nod pyr, tr glauc, tr foss frag,frm-mod hd,sbbiky.

**CLAYSTONE:**10% lt olv bn-mod olv bn,non calc,com rock flour,sft,amor.

**SBN3**  
 2947.0mMDRT 2260.3mTVDRT (-2226.9mTVDSS)

**Top of M1.3 Upper**  
 2960.0mMDRT 2269.8mTVDRT (-2236.4mTVDSS)

**Top of PS5 Sand**  
 2962.5mMDRT 2271.6mTVDRT (-2238.2mTVDSS)

**Top of PS4 Sand**  
 2967.0mMDRT 2274.9mTVDRT (-2241.5mTVDSS)

**Top of M1.3 Lower**  
 2980.5mMDRT 2284.8mTVDRT (-2251.4mTVDSS)

**SANDSTONE:**clr-trnsl,crs-dom v crs, mod wl srt,sa-sr,mod pyr cmt,occ frac qtz grn,tr nod pyr,dom lse, occ hd agg,pr-fr inf & vis por.

**COAL:**dsky bn-gysh bn,dll,mod hd, sbbiky,unevn,mod hd.

**Base of M1.3L/Top 1.4U**  
 2987.5mMDRT 2289.8mTVDRT (-2256.4mTVDSS)

**M14 Coal/Top M1.4L**  
 2994.0mMDRT 2294.5mTVDRT (-2261.1mTVDSS)

**Top M1.5**  
 3008.5mMDRT 2305.0mTVDRT (-2271.6mTVDSS)

**SANDSTONE:**clr-trnsl,f-v crs dom med,mod wl srt,sr-sa,tr nod pyr, lse,cln,fr inf & vis por,tr fluor.

**FLUORESCENCE:**2953.0m-3050.0m Tr-7% dull to mod bri ptchy-sptd gn yel fluor,v slw-slw blooming dir cut,thn gnsh yel rng res.

**SILTSTONE:**1) pl bn-dk yelsh bn,v aren g/t vf SST i/p, tr micmic, tr glauc,

500 50 5 5 100 5 1K 50 10K 500 5K 100K 1000K

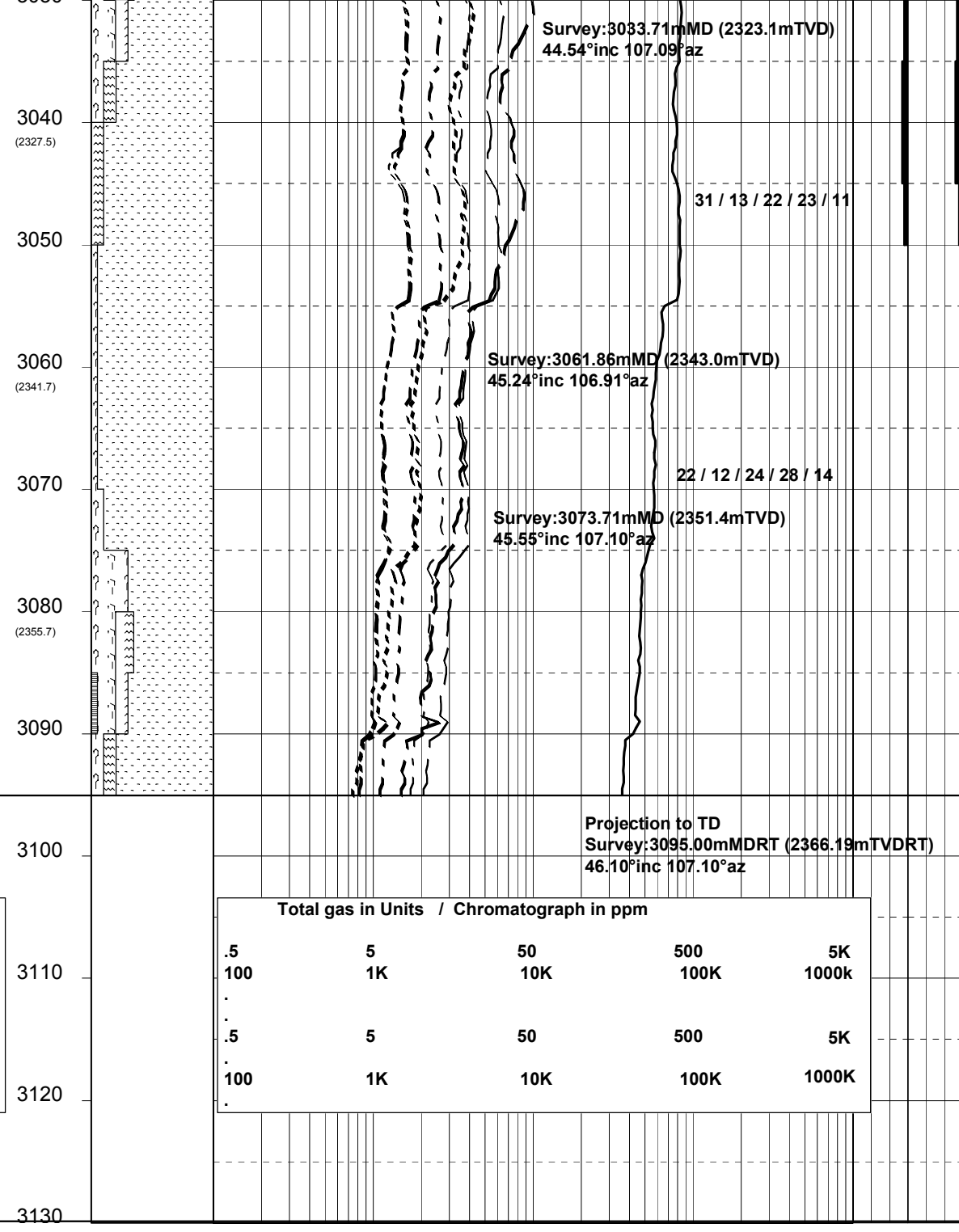
33 / 14 / 21 / 22 / 10

pH: 9.4  
Cl: 43k

WOB:15  
TDRPM:110  
MMRPM:181  
SPP:3400  
FLW:625

MW: 9.70  
FV: 66  
PV: 26  
YP: 42  
Gel: 11/18  
WI: 2.8  
pH: 9.5  
Cl: 43k

ROP (m/hr)			
500	50	5	.5
WOB (tons)			
50	25	0	
MWD Gamma Ray (api)			
0	100	200	



frm-mod nd,sbriss-sbbiky.  
2) med lt gy-med gy,com micr-pyr mtx,hd,blky.  
CLAYSTONE:lt blsh gy-lt gy,hd,blky.

Top of M1.7  
3032.5mMDRT 2322.2mTVDRT (-2288.8mTVDSS)

SANDSTONE:clr-trnsl,f-dom v crs,wl srt,sa-sr,wk pyr cmt, tr nod pyr,lse,cln,fr inf & tr vis por,fluor.  
SANDSTONE:clr-trnsl,dom f-dom v crs,wl srt,sa-sr,wk pyr cmt on crs grn,tr nod pyr,lse,cln,fr inf & vis por,no fluor.  
CLAYSTONE:lt blsh gy-lt gy,hd,blky.  
SANDSTONE:clr-trnsl,f-crs,dom med,wl srt,sa-sr,tr nod pyr,lse,cln,fr inf & vis por,no fluor.  
SANDSTONE:clr-trnsl,dom f occ crs,mod wl srt,sa-sr,tr wh arg mtx,dom lse,gen cln,pr-fr inf & vis por,no fluor.  
CLAYSTONE:lt blsh gy-lt gy,hd,blky.  
SANDSTONE:clr-trnsl,dom f,occ crs,mod wl srt,sa-sr,tr wh arg mtx,dom lse,gen cln,pr-fr inf & vis por,no fluor.  
SILTSTONE:pl bn-dk yelsh bn,v aren g/t vf SST i/p,tr micmic,frm-mod hd,sbfiss-sbbiky.  
SANDSTONE:clr-trnsl,f-v crs,pr srt,sa-sr,wk pyr cmt,tr wh arg,mtx,tr nod pyr,dom lse,gen cln,pr inf & vis por,no fluor.  
COAL:gysh bn-bnsh blk,dll,mod hd,sbbiky,unevn,slty i/p g/t CARB SLTST.

WKF W-27A reached Total Depth of 3095.0m MDRT 2366.2m TVDRT (-2332.8m TVDSS) at 06:30 hours on 24-07-2006

Run Precision Energy Services compact shuttle logging from 3090.0m MDRT to 2815.0m MDRT, 1270.0m MDRT to 1045.0m MDRT MCG-MDN-MPD-MDL-MSS-MAI

7" Production Casing shoe set at 3090.0m MDRT